

IMPORTANT:

Router Optimal Settings for proper Data

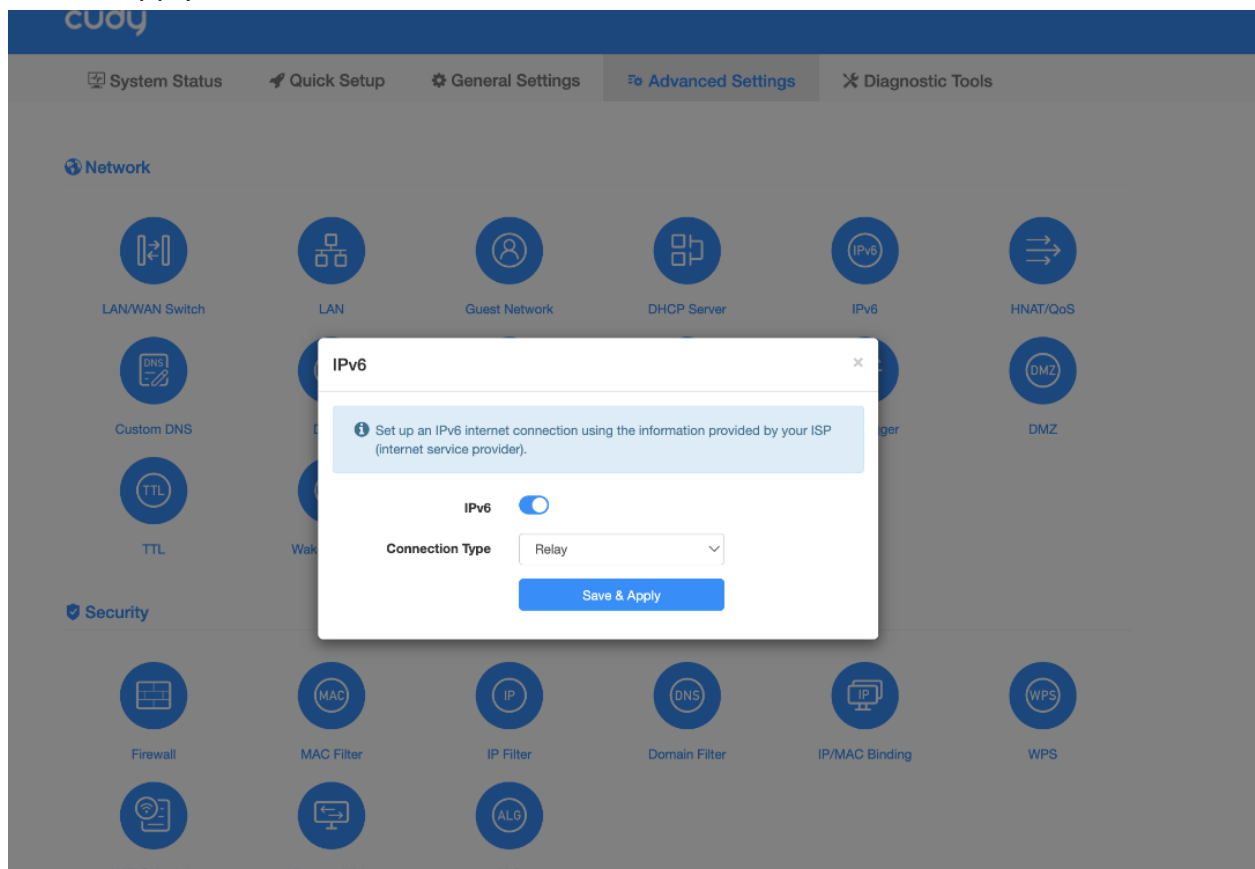
You will have to put these settings back into the router after reset

Go to Advanced Settings page -

Click IPV6 button

Enable IPV6

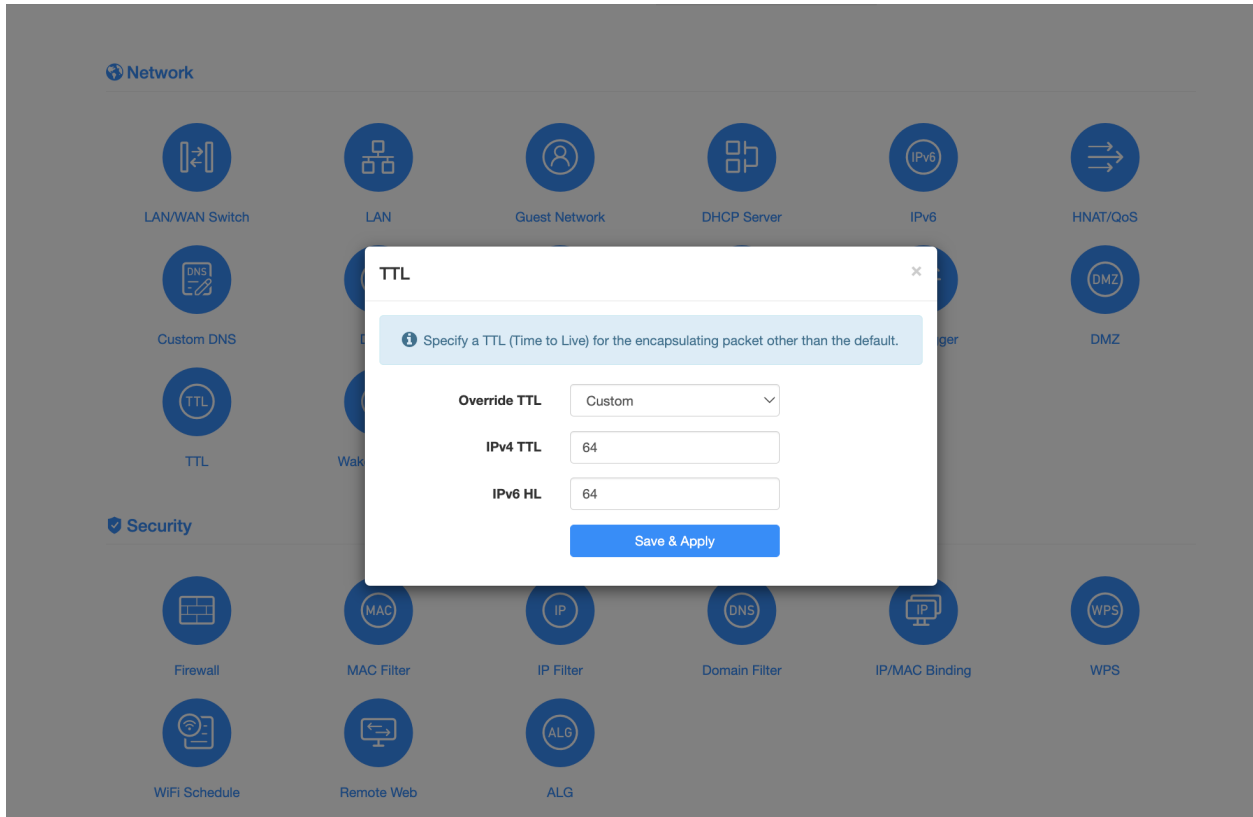
Save & Apply



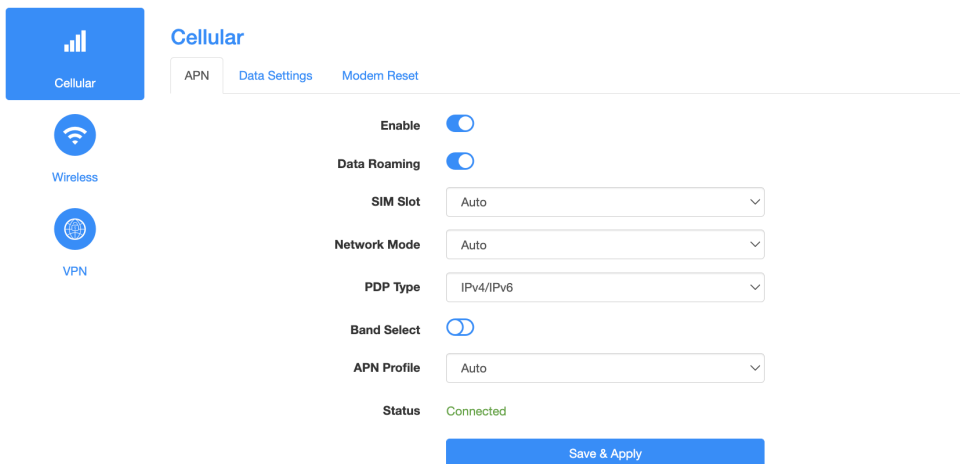
In Advanced Settings page -

Click TTL button

set to Custom 64, 64 save & apply



Go to General Settings page
make sure to change PDP type to IPV4/IPV6
Save and Apply



To enter your cell phone's IMEI
while logged into cuddy router click this link
<http://192.168.10.1/cgi-bin/luci/admin/network/gcom/atcmd>

Paste this code in the box `AT+EGMR=1,7,"xxxxxxxxxx"`
Replace the x's with your IMEI number, leave quotes in code